



elska
INTERIORS

0417 600 893 - bec@elskainterior.com.au - www.elskainterior.com.au

TABLE OF CONTENTS

01 About Elsa Interiors

02 Mission

03 Delivering Value

04 The Design Process

05 Sustainable Design

06 Healthy Homes

07 Sourcing Products

08 Previous Clients Comments

09 Managing Issues

10 Your Pre Build Checklist



ABOUT

Hi there. My name is Bec and I founded Elska Interiors in 2015. I have been renovating since 2006 and I come from a creative family.

Before I studied as an Interior Designer I offered my expertise as a scientist, systems and risk manager. Bringing these skills to the Interior Design sector allows me a lens for organised and results driven design outcomes.

I relish the opportunity to help others create the homes they can cherish. Not just a pretty house. Spaces that offer happiness, reduce stress and illness, all while you create special memories.

At my core I believe that connecting people to self, others and place, while creating spaces that are easy to live in, has the potential to elevate life, creating opportunity for happier humans and happier communities.

MISSION



To improve peoples wellbeing through thoughtful, evidence based design practices.

While the principles of Biophilic Design, Well Building Standards and Human Centric Design principles are being considered more frequently in the Corporate and Government sector, they are yet to be fully realised in the residential sector.

These principles include strategies for healthier, more connected and adaptable spaces.

The goal is to assist home owners in achieving a more livable home, that suits them for years to come.

Because at the end of the day, healthy, happy people have a greater potential for creating amazing communities.

DELIVERING VALUE

When renovating your home, there are so many moving parts to be considered, from tile selections and grout colour to livable layouts. Working through the decisions can be time consuming and often feel overwhelming, all while you manage your own career.

Working with an experienced interior designer gifts you your precious time and a home that is finished to a considered and professional level.

Through my experience and process of design documentation for trades, we can identify and know the majority of the answers up front.

This reduces the issues and unknowns in your home renovation while you keep doing what you do best. Lets make your new home a reality.



THE DESIGN PROCESS



Elska Interiors offers design & decorating services from the Kitchen to the Living Room, to the Outdoor Living Spaces. These services include:

- Creating a concept as a guiding idea for the project.
- Designing the floorplan so it fits your family for now and then.
- Digital renders for key home areas (kitchen, laundry, bathroom) so you can see the idea.
- Furniture selections, orders and placement. This can include custom upholstery.
- Selecting finishes such as paint, laminates, window dressings etc
- Detailed documentation for your trades so that they can quote accurately and know what to do when no one is on site.
- Being available to trades for when questions come up.
- Styling your beautiful new spaces so that they feel like home.

What I won't do- In Australia, Interior Designers are not legally allowed to project manage trades which includes direct engagement or instruction on how to perform their specific trade.

I will work with your trades to review plans and consult on meeting the brief of the design concept.

THE DESIGN PROCESS



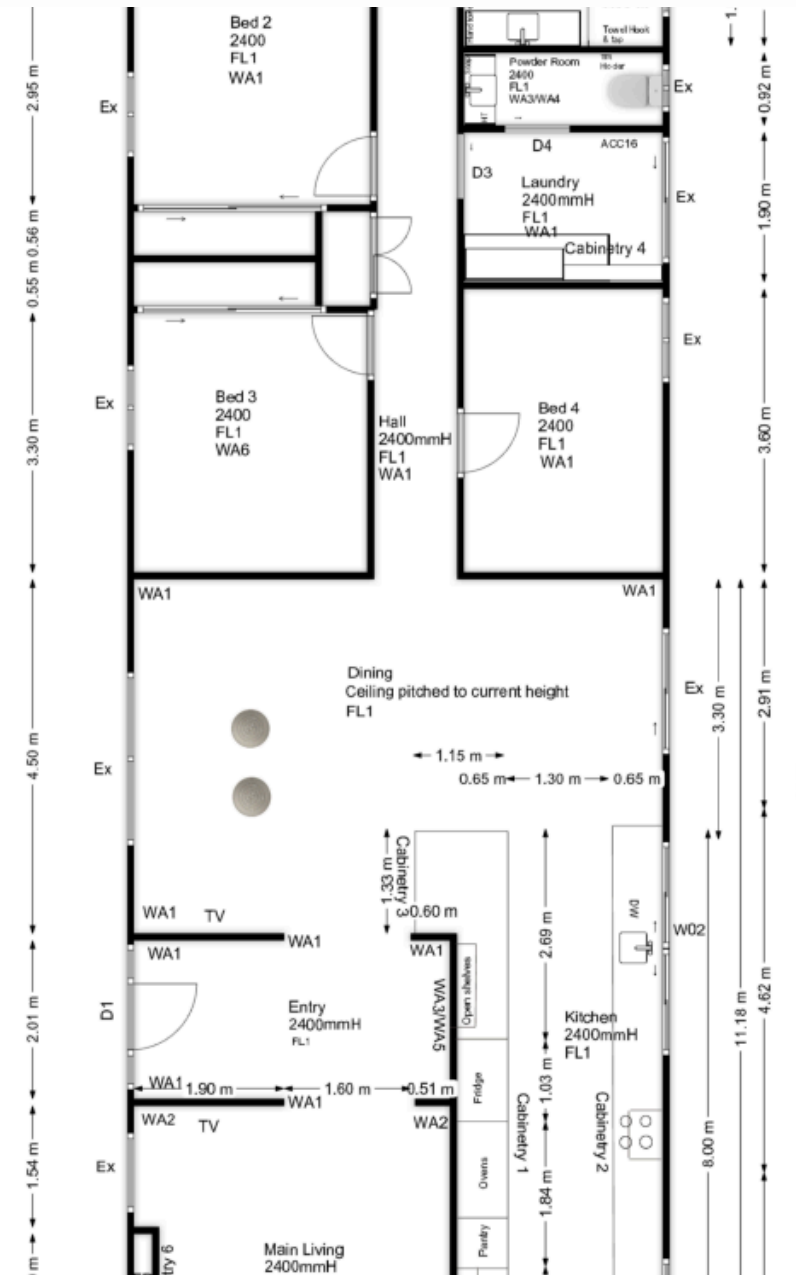
01 Concept images and written descriptions guide the overall feeling and look.



02 Computer renders to show your new home before construction.

THE DESIGN PROCESS

03 Materials are selected from a wide range of retail and trade suppliers and brought to you so that you can see and feel the products in your home.



Wet Area Fixtures and Fittings

11.1 Basins and Baths

DESCRIPTION	LOCATION	SPECIFICATION	FINISH/COLOUR	IMAGE	SUPPLIER
Sink	Kitchen	Piazza Single Square Bowl Sink 770 x 450mm No Tap Hole Abeys Product Code: 118584 Price: \$1,385.00	Finish: Stainless Steel Undermount		Builder/ Tradalink
Sink	Laundry	Nugleam 35L Utility Sink-1 Tap Hole Everhard Product Code: 166502 Price: \$461.00 555w(flange) x 485 wide (bowl) x 225hx455d	Finish: Stainless Steel Top set		Builder/ Tradalink
Bath	Main Bathroom	Isabella Bath 1500 Right Hand Curve Edge Fienza Product Code: 166664 Price: \$1,821.00 1500x750x600h	Finish: gloss Colour: white		Builder/ Tradalink
Niche x 2	Ensuite/ Main Bathroom shower	Mondella 365 x 900 x 90mm Shower Niche 5 (1) I/N: 0332310 \$134	Finish: NA		Builder
Niche x 2	Main Bathroom over bath	Mondella 365 x 320 x 90mm Shower Niche 5 (1) I/N: 0332308 \$69	Finish: NA		Builder

11.2 Tapware and Showers

DESCRIPTION	LOCATION	SPECIFICATION	FINISH/COLOUR	IMAGE	SUPPLIER
Tap x 2 for kitchen and laundry sinks	Kitchen/ Laundry	Vivid Slimline Sink Mixer Gooseneck Phoenix Product Code: 130645 \$313	Finish: Chrome		Builder/ Tradalink
Basin/Bath Tap x 5	Ensuite x 2/ Powder Room x 1/ Main Bathroom x 2	Vivid Slimline Wall Basin Mixer Set 230mm Phoenix Product Code: 199108 Current Stock: Price:	Finish: Chrome		Builder/ Tradalink

04 Documented plans will ensure you and your trade team know every little detail, from cabinetry placement to grout colour.

THE DESIGN PROCESS

- 05** Styling your home is the final step and highly recommended. I will explain the steps I'm taking so that you can learn to adjust it as you please. I may also request to photograph your home at this stage. Photographing projects helps me to show other people how I can help them in their journey.



Styling homes offers opportunity for the telling of your story, the memory of moments passed, places for eyes to rest and wander, a room that comforts and inspires

SUSTAINABLE DESIGN

With the construction industry accounting for 40% of carbon emissions and more than 20 million tonnes of furniture waste per year in Australia alone, it is important to consider ways we can reduce the impact.

Here are some ways we can work together to reduce the footprint. Let me know if this is of interest to you and we can account for it during the design phase.



Re-Use and Recycle

Consider if a piece of your furniture can be re-styled or refinished for you or offer it to others on a local selling platform.

If it past it's useful life, aim to recycle where possible. More and more councils and B corporations are assisting with roadmaps for recycling.

Purchase Responsibly

When purchasing materials, consider the footprint the material has created, the durability of the item and its end of life options.

Items made in Australia from renewable resources, that are highly durable and have end of life strategies are better for the planet.

Sustainable Living

Considering issues such as home orientation, cross breezes and eaves can make a difference to the ongoing sustainability of your home.

Simple but important decisions at the building design phase will reduce your energy consumption and result in a more comfortable home.

HEALTHY HOMES



With people spending over 90% of their time indoors, it is imperative that we take care when designing the built environment.

The WELL Building Standard was developed specifically for the commercial and health sectors to prioritize human health in every aspect of design and construction. Created in collaboration with building experts, medical professionals, and scientists, it aims to enhance both mental and physical well-being within the built environment.

Although the WELL Building Standard is primarily designed for commercial spaces, I strive to integrate its principles into residential settings whenever feasible. Furthermore, I incorporate Biophilic Design principles, which complement and align with the WELL Standard.

These standards address aspects such as natural light, chemical reduction, and fostering connections with nature. I will let you know the options available to you so that you can make an informed decision.

FROM MY CLIENTS

Bec is an amazing designer, her professionalism, eye for detail and also listening to her clients needs is a 5 star rating. Becs customer services is also a 5 starreturning of phone calls, emails was outstanding. I would recommend anyone that is looking for an interior designer – don't look any further stick with Elska Interiors!! We did and we are over the moon with our results. Thank you Bec !!!

Kylie, Samford Valley

Bec, your interior design expertise and direction means the world to me. I really appreciate that you don't have a cookie cutter approach and really listened and understood where I was and helped me get to where I wanted my home to look and feel. Our home is warm and welcoming and so beautiful now. We love everything you did for us.

Jules, Mount Samson

Everyone loves this room. It makes them smile. The kids always choose this room to play in. The book club ladies love coming here. It just feels perfect for book club.

Melissa, Samford Valley

Thanks so much for all of your hard work Bec. It is so brilliant, you make everything so incredibly easy. You are a blessing!!!!

Sally (Arana Hills)

Sally, Arana Hills



Rebecca from Elska Interiors is an absolute pleasure to work with. She is client and detail focused, prompt, thorough and very enthusiastic. Thank you so much for creating , not just a beautiful but also practical kitchen for us, Rebecca. We look forward to working with you again.

Suzanne, Samford Valley

MANAGING ISSUES

With so many moving parts it is inevitable that something may go wrong at some point during your renovation. How we manage the issue will be the defining factor.

In the event you have any concerns about your design or the design process please let me know asap. It is important to me that you have an enjoyable experience and more importantly achieve your home goals. We can only do this through open, honest communication.

I will always treat you with respect and ask for the same in turn.

If a product arrives damaged or incomplete please document everything with photos. Email the information to your supply contact as soon as possible for resolution.



While all necessary documentation is provided for a trade to correctly install products, it is no guarantee that human error will not occur.

If there is an incorrect installation, the design documentation and product installation information can be used to discuss with trades for a resolution.

YOUR PREBUILD CHECKLIST

Before you get started, it's important to check that the appropriate measures have been taken to ensure you are protected. These may include but not be limited to:

- Builder / Trade Insurance and Licensing- Verify that your builder is licensed and insured for the type of work being undertaken.
- Quality Of Builders Work- Check previous projects and reviews
- Your Own Home Insurance may require extension to cover your home during the renovation
- Council Approvals- Requirement for approvals is dependent on the scope of work.
- Expected Build Schedule- Understand your builders anticipated timeline so you can manage your expectations and daily life plans.
- Strategies For Out Of Room/ Home- Do you need off site storage or accommodation
- Will Your Property Be Secure For The Entirety Of The Renovation or do you need to secure valuables elsewhere.





elska
INTERIORS

0417 600 893

bec@elskainterior.com.au

www.elskainterior.com.au

Office Hours - Mon-Fri 8:30-4:30